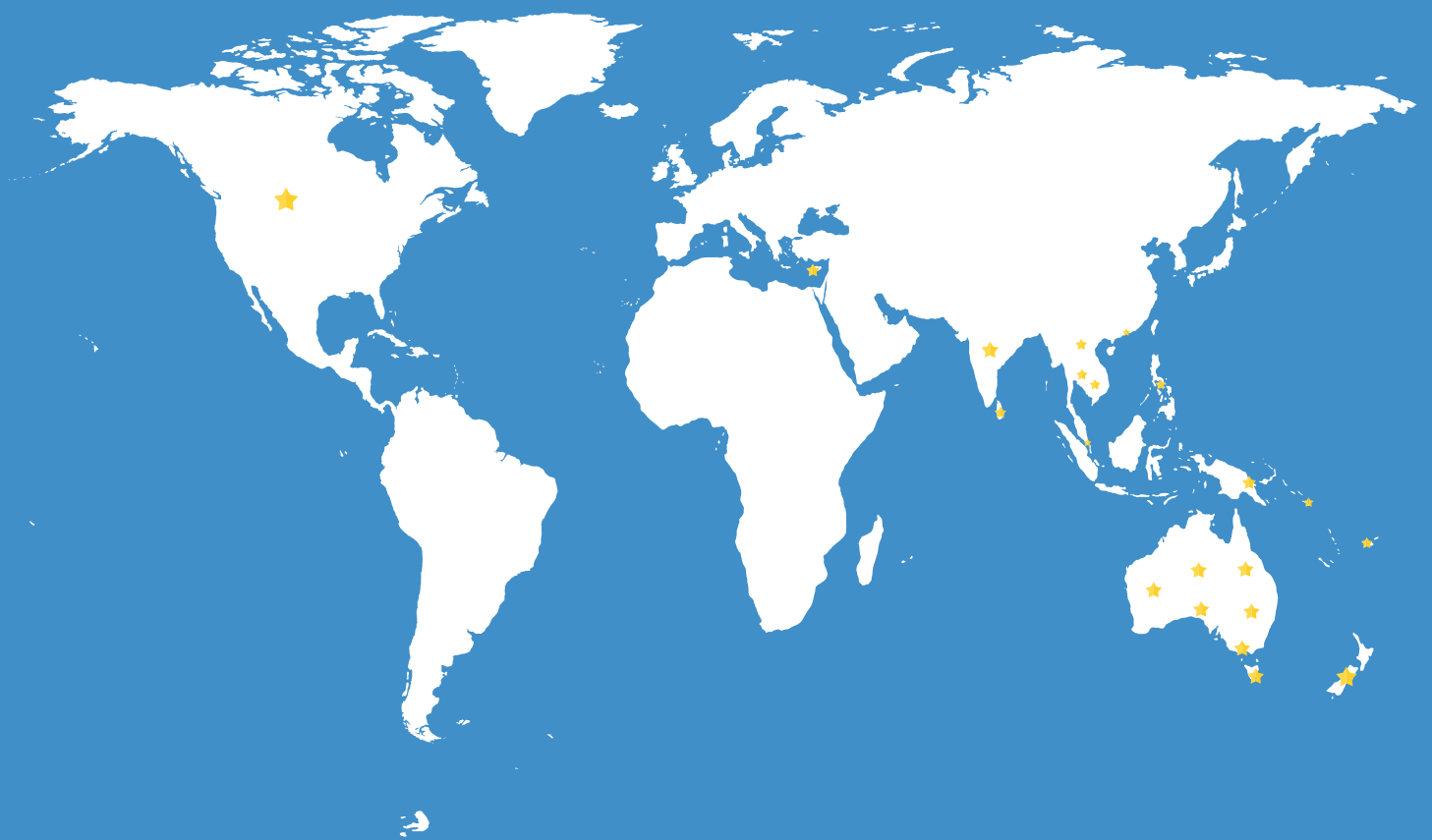


DUROTECH
Waterproofing • Sealants • Adhesives



DUROTECH WATERPROOFING SYSTEMS

Proudly Manufactured In Australia Since 1977

www.durotechindustries.com.au



TABLE OF CONTENT

SYSTEM 1	Lift Pits	2	SYSTEM 9	Ponds/ Water Features	10
SYSTEM 2	Retaining Walls	3	SYSTEM 10	Roof Waterproofing Non Exposed	11
SYSTEM 3	Planter Box Waterproofing	4	SYSTEM 11	Roof Waterproofing Exposed	12
SYSTEM 4	Podium Waterproofing	5	SYSTEM 12	External Facade Coatings	13
SYSTEM 5	Balcony/Decks	6	SYSTEM 13	Epoxy Flooring System	14-15
SYSTEM 6	Internal Wet Area Waterproofing	7	Durotech Projects		16-18
SYSTEM 7	Plant Room Waterproofing	8	Case Study		19-20
SYSTEM 8	Water Tanks	9	Product Category		21

Disclaimer : The information provided in this Durotech Waterproofing System brochure is correct at the time of printing (albeit is subject to change at any time) and is intended to give a simple description of the product and its capabilities. In practice, the substrate, intended surface to be treated and environmental conditions vary widely, making it essential for the user to determine the products suitability for a particular application and to ensure that the product is not used beyond its physical limitations. If in doubt contact the manufacturer. The product will perform as described herein provided it is applied in accordance with the manufacturer's instructions as stated in the manufacturers technical data sheet and provided that the building and installation is structurally sound and the application is carried out competently. Durotech terms and conditions of sale apply.

Lift Pits



Duroproof Polyurethane Solvent Based Polyurethane Membrane (System 1a)

Joint Sealant	DuroSeal 40FC
Primer	Hibuild Epoxy Primer
Membrane	Duroproof Polyurethane

- Moisture curing
- Application by brush, spray, roller, squeegee
- +800 % Elongation
- Single component no mixing

Use Areas

- Basement / Lift Pit Walls
- Retaining Walls & Planter Boxes
- Balconies
- Podiums



Duroflex Tank 2 Part Flexible Cementitious Membrane (System 1b)

Joint Sealant	DuroElasto Tape
Primer	Self Priming
Membrane	DuroFlex Tank

- No primer required, bonds to damp surfaces
- Flexible with good elongation properties
- Can be applied on vertical and horizontal surfaces
- Suitable for immersed and underground areas

Use Areas

- Basement / Lift Pit Walls
- Retaining Walls & Planter Boxes
- OSD Water Tanks



Retaining Walls



Duroproof Polyurethane Solvent Based Polyurethane Membrane (System 2a)

Joint Sealant	DuroSeal 40FC
Primer	Hibuild Epoxy Primer
Membrane	Duroproof Polyurethane

- Moisture curing
- Application by brush, spray, roller, squeegee
- +800 % Elongation
- Single component no mixing

Use Areas

- Basement / Lift Pit Walls
- Retaining Walls & Planter Boxes
- Balconies
- Podiums



Duroproof BLW Water Based Bitumen Latex Membrane (System 2b)

Joint Sealant	DuroSeal 40FC
Primer	Hibuild Epoxy Primer
Membrane	DuroMastic BLW

- Single Component, Simple Application
- Waterbased, Environmentally Friendly
- Excellent Strength & Elongation
- Rapid Curing

Use Areas

- Basement / Lift Pit Walls
- Retaining Walls & Planter Boxes



Duroflex Tank 2 Part Flexible Cementitious Membrane (System 2c)

Joint Sealant	DuroElasto Tape
Primer	Self Priming
Membrane	DuroFlex Tank

- No primer required, bonds to damp surfaces
- Flexible with good elongation properties
- Can be applied on vertical and horizontal surfaces
- Suitable for immersed and underground areas

Use Areas

- Basement / Lift Pit Walls
- Retaining Walls & Planter Boxes
- OSD Water Tanks



Planter Box Waterproofing



Duroproof Polyurethane Solvent Based Polyurethane Membrane (System 3a)

Joint Sealant	DuroSeal 40FC
Primer	Hibuild Epoxy Primer
Membrane	Duroproof Polyurethane

- Moisture curing
- Application by brush, spray, roller, squeegee
- +800 % Elongation
- Single component no mixing

Use Areas

- Basement / Lift Pit Walls
- Retaining Walls & Planter Boxes
- Balconies
- Podiums



Duroproof PU Black AR Polyurethane Membrane (System 3b)

Joint Sealant	DuroSeal 40FC
Primer	Hibuild Epoxy Primer
Membrane	Duroproof PU Black AR

- Resistant to Bacteria
- Economical
- High Elasticity
- Internal/External use

Use Areas

- Bridges
- Tunnels
- Foundation Walls
- Shower Pens



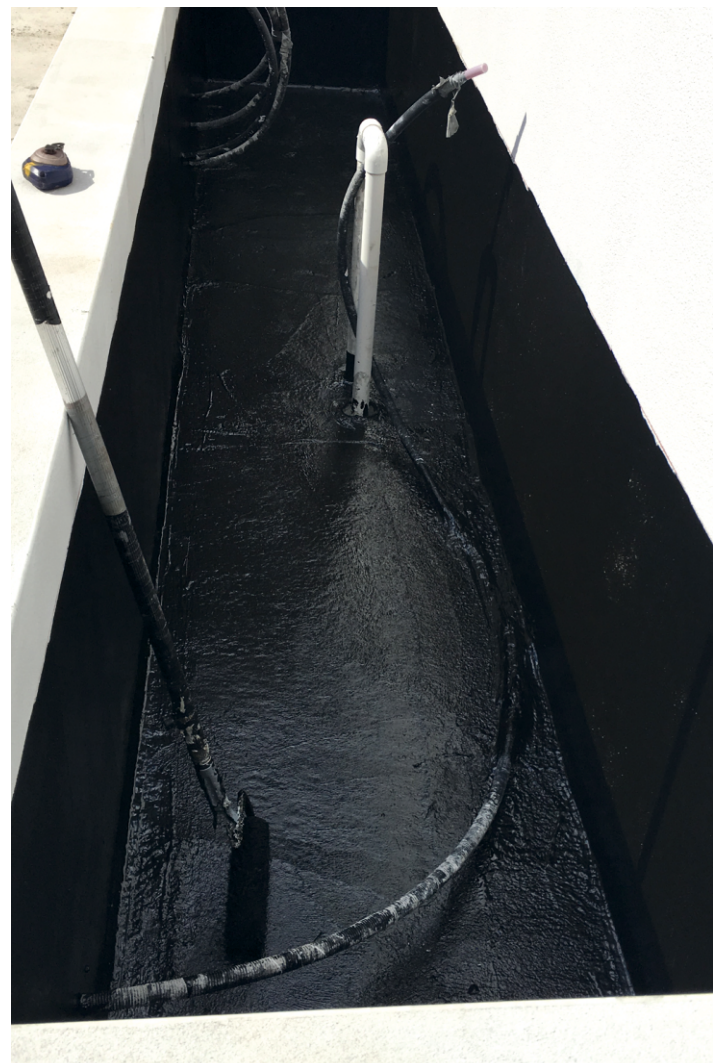
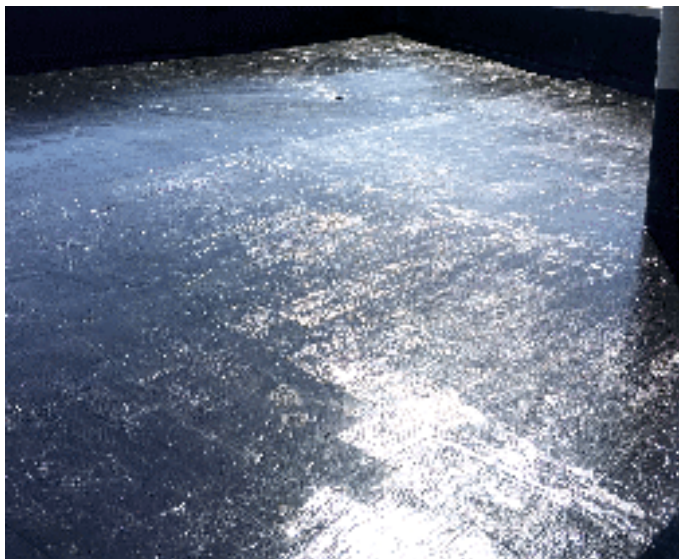
Duroflex Tank 2 Part Flexible Cementitious Membrane (System 3c)

Joint Sealant	DuroElasto Tape
Primer	Self Priming
Membrane	DuroFlex Tank

- No primer required, bonds to damp surfaces
- Flexible with good elongation properties
- Can be applied on vertical and horizontal surfaces
- Suitable for immersed and underground areas

Use Areas

- Basement / Lift Pit Walls
- Retaining Walls & Planter Boxes
- OSD Water Tanks



Podium Waterproofing



Duroproof PPM

Solvent Based Polyurethane Membrane
(System 4a)

Joint Sealant	DuroSeal 40FC
Primer	Hibuild Epoxy Primer
Membrane	Duroproof PPM

- Single component, easy to spread
- Class III - elongation as per AS/NZ 4858
- Excellent toughness
- Low odour, low VOC

Use Areas

- Internal Wet areas
- Retaining Walls & Planter Boxes
- Balconies
- Podiums
- Rooftops (Non exposed light traffic)



Duromastic P15

Water Based Polyurethane Membrane
(System 4b)

Joint Sealant	Duroseal 50FC
Primer	Hibuild Epoxy Primer
Membrane	Duromastic P15

- Fast drying Rapid Cure Technology
- Water-Based, Environmentally Friendly
- Excellent Strength & over 800% Elongation
- Single Component, Simple Application

Use Areas

- Internal Wet areas
- Balconies
- Podiums
- Rooftops (Non exposed light traffic)



Balcony/Decks



Duromastic Duraroom Water Based Polyurethane Membrane (System 5a)

Joint Sealant	DuroSeal 40FC
Primer	Hibuild Epoxy Primer
Membrane	DuroMastic Duraroom

- Innovative Crack-bridging Technology
- Excellent Strength & Elongation
- Foot Traffic Resistant
- Water-Based, Environmentally Friendly

Use Areas

- Balconies
- Rooftops(Exposed to UV)
- Rooftops (Non exposed light traffic)
- Exterior Facade walls



Duromastic P15 Water Based Polyurethane Membrane (System 5b)

Joint Sealant	Duroseal 50FC
Primer	Hibuild Epoxy Primer
Membrane	DuroMastic P15

- Fast drying Rapid Cure Technology
- Water-Based, Environmentally Friendly
- Excellent Strength & over 800% Elongation
- Single Component, Simple Application

Use Areas

- Internal Wet areas
- Balconies
- Podiums
- Rooftops (Non exposed light traffic)



Duromastic ACS-2 2 Part Flexible Cementitious Membrane (System 5c)

Joint Sealant	DuroElasto Tape
Primer	Hibuild Epoxy Primer
Membrane	DuroMastic ACS-2

- Water-Based, Environmentally Friendly
- Rapid Cure Membrane
- Economical Waterproofing Membrane
- Durable Fibre reinforced

Use Areas

- Internal Wet areas
- Balconies
- Podiums
- Exterior Facade walls



Internal Wet Area Waterproofing



Durotech 007 FC

SBR Fast Cure Membrane

(System 6a)

Joint Sealant	Duroseal 50FC
Primer	Hibuild Epoxy Primer
Membrane	Durotech 007 FC

- Fast Cure Technology
- Environmentally friendly
- High-Elasticity
- Class 3 Rapid Cure UTM Membrane

Use Areas

- Internal & External Wet tiled areas
- Concrete, Render & Masonry
- FC Sheet & Plasterboard
- Sheet Membranes



Duromatic P15

Water Based Polyurethane Membrane

(System 6b)

Joint Sealant	Duroseal 50FC
Primer	Hibuild Epoxy Primer
Membrane	Duromatic P15

- Fast drying Rapid Cure Technology
- Water-Based, Environmentally Friendly
- Excellent Strength & over 800% Elongation
- Single Component, Simple Application

Use Areas

- Internal Wet areas
- Balconies
- Podiums
- Rooftops (Non exposed light traffic)



Plant Room Waterproofing



Duroproof PPM/ATC

Solvent Based Polyurethane Membrane
(System 7a)

Joint Sealant	DuroSeal 40FC
Primer	Hibuild Epoxy Primer
Membrane	Duroproof PPM
Top Coat	Duroproof TTC

- Single component, easy to spread
- Class III - elongation as per AS/NZ 4858
- Excellent toughness
- Low odour, low VOC

Use Areas

- Rooftops (Exposed to UV)
- Rooftops (Non exposed light traffic)



Duromastic AC non slip

Water Based Acrylic Membrane
(System 7b)

Joint Sealant	DuroSeal 40FC
Primer	Hibuild Epoxy Primer
Membrane	DuroMastic AC non slip

- UV Stable
- Light Foot Traffic Resistant
- Water Based, Environmentally Friendly
- Low Odour & Low VOC

Use Areas

- Rooftops (Exposed to UV)
- Rooftops (Non exposed light traffic)
- Exterior Facade walls



Duropoxy SLR 100

100% solids epoxy high performance floor coating
(System 7c)

Joint Sealant	DuroSeal 40FC
Primer	Self Priming
Membrane	Duropoxy SLR 100

- 100% solvent free
- Chemical resistant
- Self Leveling
- Low VOC

Use Areas

- Garage, Factory floors
- Workshops
- Warehouses



DUROPOXY SLR 100



DUROPOXY SLR 100



DUROPOXY SLR 100

Water Tanks



Duroflex Tank

2 Part Flexible Cementitious Membrane (System 8a)

Joint Sealant	DuroElasto Tape
Primer	Self Priming
Membrane	DuroFlex Tank

- No primer required, bonds to damp surfaces
- Flexible with good elongation properties
- Can be applied on vertical and horizontal surfaces
- Suitable for immersed and underground areas

Use Areas

- Basement / Lift Pit Walls
- Retaining Walls & Planter Boxes
- OSD Water Tanks



DUROFLEX TANK



Duroflex 1K

One component, flexible, cementitious fibre reinforced water proof membrane (System 8b)

Joint Sealant	DuroElasto Tape
Primer	Self Priming
Membrane	Duroflex 1k

- High adhesion strength.
- Good crack bridging
- Easy to apply by brush/roller or spray
- Can be applied on damp surfaces.

Use Areas

- Internal wet areas
- Planter boxes and Retaining walls.
- Concrete Swimming Pools



DUROFLEX TANK



DUROFLEX TANK

Ponds/ Water Features



Duroflex Tank

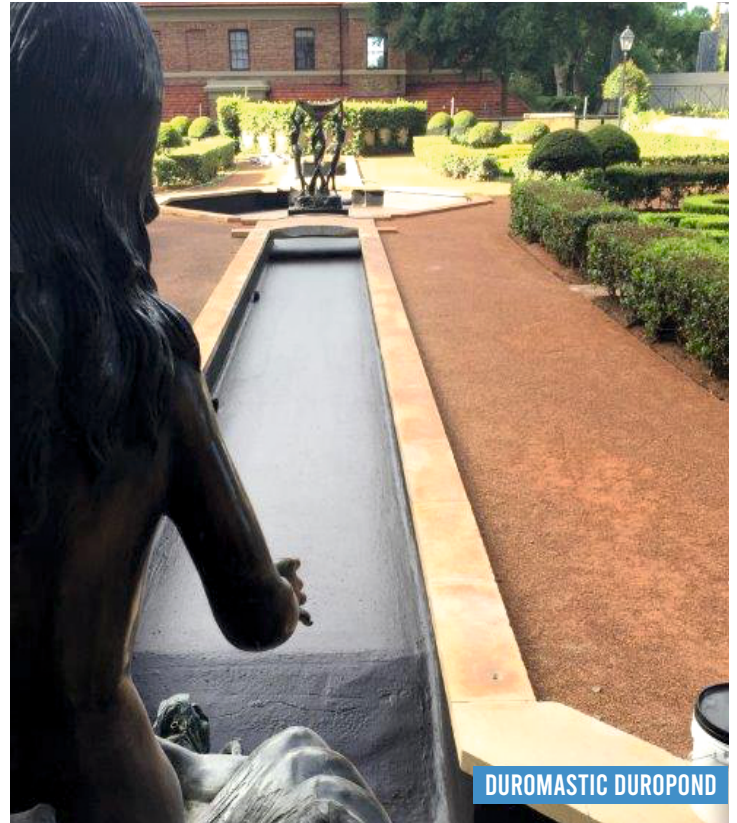
2 Part Flexible Cementitious Membrane (System 9a)

Joint Sealant	DuroElasto Tape
Primer	Self Priming
Membrane	DuroFlex Tank

- No primer required, bonds to damp surfaces
- Flexible with good elongation properties
- Can be applied on vertical and horizontal surfaces
- Suitable for immersed and underground areas

Use Areas

- Basement / Lift Pit Walls
- Retaining Walls & Planter Boxes
- OSD Water Tanks



DUROMASTIC DUROPOND



Duromatic Duropond

Solvent Based Polyurethane Membrane (System 9b)

Joint Sealant	Duroseal 40FC
Primer	Hibuild Epoxy Primer
Membrane	DuroMastic Duropond

- Single component, waterbased
- Excellent water resistance
- Low VOC
- + 600% Elongation

Use Areas

- OSD Water Tanks
- Water features
- Ponds
- Fountains & bird baths



DUROMASTIC DUROPOND



Duroflex 1K

One component, flexible, cementitious fibre reinforced water proof membrane (System 9c)

Joint Sealant	DuroElasto Tape
Primer	Self Priming
Membrane	Duroflex 1k

- High adhesion strength.
- Good crack bridging
- Easy to apply by brush/roller or spray
- Can be applied on damp surfaces.

Use Areas

- Internal wet areas
- Planter boxes and Retaining walls.
- Concrete Swimming Pools

Roof Waterproofing non exposed



Duroproof PPM

Solvent Based Polyurethane Membrane
(System 10a)

Joint Sealant	DuroSeal 40FC
Primer	Hibuild Epoxy Primer
Membrane	Duroproof PPM

- Single component, easy to spread
- Class III - elongation as per AS/NZ 4858
- Excellent toughness
- Low odour, low VOC

Use Areas

- Internal Wet areas
- Retaining Walls & Planter Boxes
- Balconies
- Podiums
- Rooftops (Non exposed light traffic)



Duromastic P15

Water Based Polyurethane Membrane
(System 10b)

Joint Sealant	Duroseal 50FC
Primer	Hibuild Epoxy Primer
Membrane	DuroMastic P15

- Fast drying Rapid Cure Technology
- Water-Based, Environmentally Friendly
- Excellent Strength & over 800% Elongation
- Single Component, Simple Application

Use Areas

- Internal Wet areas
- Balconies
- Podiums
- Rooftops (Non exposed light traffic)



Duromastic Durarroof

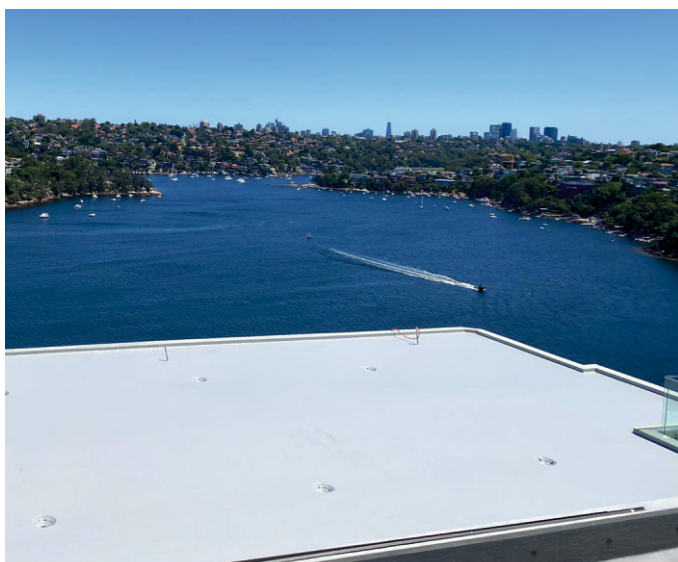
Water Based Polyurethane Membrane
(System 10c)

Joint Sealant	DuroSeal 40FC
Primer	Hibuild Epoxy Primer
Membrane	DuroMastic Durarroof

- Innovative Crack-bridging Technology
- Excellent Strength & Elongation
- Foot Traffic Resistant
- Water-Based, Environmentally Friendly

Use Areas

- Balconies
- Rooftops(Exposed to UV)
- Rooftops (Non exposed light traffic)
- Exterior Facade walls



DUROPROOF PPM

Roof Waterproofing Exposed



Duroproof PPM/ATC Solvent Based Polyurethane Membrane (System 11a)

Joint Sealant	DuroSeal 40FC
Primer	Hibuild Epoxy Primer
Membrane	Duroproof PPM
Top Coat	Duroproof ATC

- Single component, easy to spread
- Class III - elongation as per AS/NZ 4858
- Excellent toughness
- Low odour, low VOC

Use Areas

- Rooftops (Exposed to UV)
- Rooftops (Non exposed light traffic)



Duromastic Durarroof Water Based Polyurethane Membrane (System 11b)

Joint Sealant	DuroSeal 40FC
Primer	Hibuild Epoxy Primer
Membrane	DuroMastic Durarroof

- Innovative Crack-bridging Technology
- Excellent Strength & Elongation
- Foot Traffic Resistant
- Water-Based, Environmentally Friendly

Use Areas

- Balconies
- Rooftops (Exposed to UV)
- Rooftops (Non exposed light traffic)
- Exterior Facade walls



Duromastic Durarroof Pro Water Based Polyurethane Membrane (System 11c)

Joint Sealant	DuroSeal 40FC
Primer	Hibuild Epoxy Primer
Membrane	DuroMastic Durarroof Pro

- Excellent UV Resistance
- Quick Drying
- Class III single component membrane
- 50% RH in non critical areas

Use Areas

- Internal Wet areas
- Rooftop, Podium, External Balconies
- Concrete
- Cement Render, FC Sheet



External Facade And Parapet Exposed Surfaces



Duromastic Duraroom Pro Water Based Polyurethane Membrane (System 12a)

Joint Sealant	DuroSeal 40FC
Primer	Hibuild Epoxy Primer
Membrane	DuroMastic Duraroom Pro

- Excellent UV Resistance
- Quick Drying
- Class III single component membrane
- 50% RH in non critical areas

Use Areas

- Internal Wet areas
- Rooftop, Podium, External Balconies
- Concrete
- Cement Render, FC Sheet



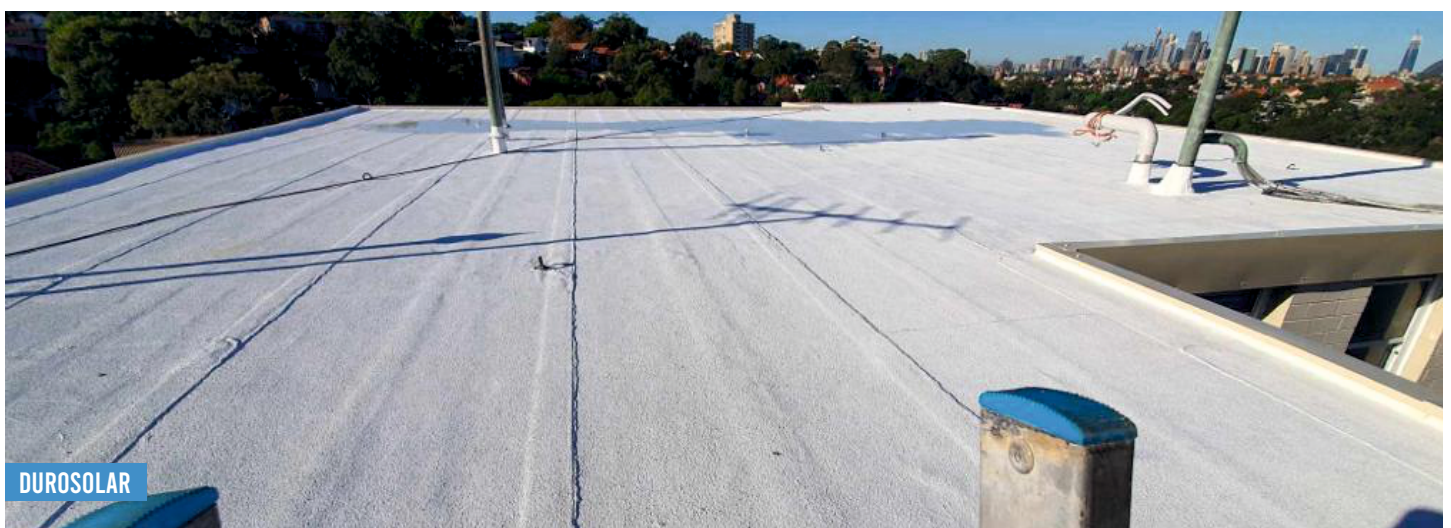
Duromastic Durosolar Solar Reflective Membrane Coating For Facade Walls & Fascias (System 12b)

Primer	Hibuild Epoxy Primer
Membrane	Durosolar

- Water Based, Environmentally Friendly
- Light Foot Traffic Resistant
- Low Odour & Low VOC
- Available in Colours

Use Areas

- Concrete, brick, blockwork, render walls and facades, concrete roof tiles
- Bitumen roof top coating
- As a Solar Reflective colour topcoat for Duraroom, Duromastic AC & P15.



Epoxy Flooring Systems

DuroPoxy SLR 100

DuroPoxy SLR100 is a solvent free, durable floor coating based on a hard wearing, two component epoxy resin system. The cured floor provides excellent resistance to chemical and mechanical damage. There is a semi-gloss surface finish for this product that is textured and durable. This product can be applied to a 400um profile, this can be achieved in two coats.

Features

- Kits – no onsite mixing errors
- 100% solvent free
- Extended working time
- Chemical resistance
- Bonds to damp surface
- Chemical resistant
- Non-flammable
- Can be coloured – enhance the solution for client needs



Use Areas

- Workshops
- Garage floors
- Factory floor
- Warehouses
- Shop floors

DuroPoxy Binder

DuroPoxy Binder is an excellent product that is truly versatile. It is truly good technology ready for saving cost and creating leverage in your current based markets. The general-purpose binder has a wide variety of applications. This multi go to application allows epoxy to be used in a wide variety of application.

A solvent less binder to be used with sands and as a concrete binder designed for applications for structural integrity. This is low viscosity, hydrophobic (bonds to wet surfaces) and hardening to form a hard surface with excellent adhesions, compressive strength and tensile strength and creates resistance to the entry of water.

Features

- One product - creates many solutions
- 100% solvent free
- Low temperature cure
- Extended working time
- Chemical resistance
- Excellent adhesion to damp or dry concrete
- Chemical resistant
- Excellent mechanical strength
- Extend time and suitable for aggregate mixture



Use Areas

- Repair and structural bonding of new to old concrete
- Repair of cracks in old concrete floors
- Grouts for bolts and support in concrete
- Coving applications

Epoxy Flooring Systems

DUROPOXY PRIMER 100

DuroPoxy Primer 100 is a solvent free, non pigmented two component epoxy based primer for Durotech self levelling flooring epoxy systems. This also can be for a primer for polyurethane flooring products medium to heavy industrial wear. DuroPoxy Primer 100 is used as a primer over dense concrete and cementitious surfaces as the key surface coating and bonding agent suitable for epoxy resin systems. DuroPoxy Primer 100 is applied to substrates such as concrete and cement screeds.

Features

- High adhesive strength - creates an extremely good bond to concrete substrates and aggregates
- Lower viscosity
- Excellent cure rate low temperatures
- Chemical resistance
- Excellent adhesion to dry, damp and or dense surfaces
- Multi-purpose epoxy primer
- Non-flammable
- Very low VOC content



Use Areas

- Primer for dense concrete
- Mortar
- Screed
- Primer for trafficable epoxy systems
- Primer for polyurethane membranes
- Primer for damp substrates

Our Project Pictures



Global Switch (400 Harris St, Ultimo)



Queenwood School for Girls, Mosman



University of Wollongong – Early Start Facility



University of Wollongong – Early Start Facility



Westmead Millennium Institute (Westmead Hospital)

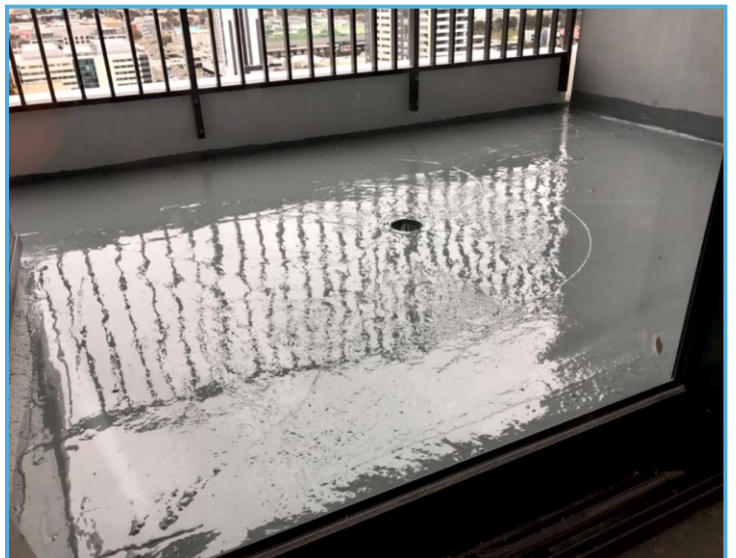


University of Western Sydney

Durotech Product Project Photos



Durotech Product Project Photos



CASE STUDY

The Tallest Residential Tower In Western Sydney - One Australia Avenue



- **PROJECT**
Sydney, NSW, Australia
- **PROJECT COMPLETION DATE**
February 2015
- **DEVELOPER**
Parkview

PROJECT SPECIFICATIONS

Australia Avenue Olympic village is one of the most prestigious premium buildings in the Sydney Homebush area. Spanning over 2 towers featuring 360 views in Sydney as well as an impressive world class design and beautiful city and bridge views.

THE DUROSYSTEM PRODUCT RANGE

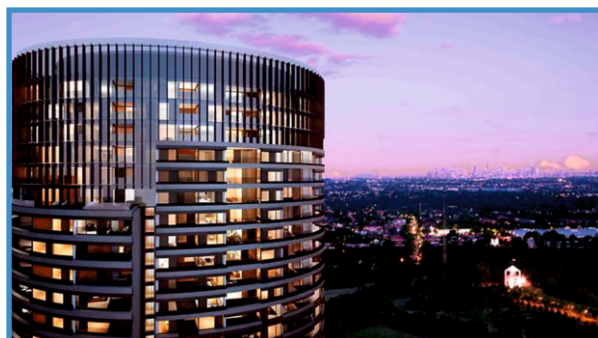
The tallest residential tower in western Sydney – at 30 floor high – is to be known as One Australia Avenue and is located in Sydney Olympic Park.

The elliptical glass-walled building will have bronze-coloured bands wrapped around its façade and will be surrounded by 430-hectares of parklands.

Supported, tested and backed by a team of specialist local experts with a combined 40 years of Australia market experience, Durotech was used across a number of applications.

- Water Tanks
- Lift Pits
- Planter Boxes
- Internal Wet Areas
- Plant Rooms
- Balconies
- Podiums
- Roof Tops

With sustainability now the focus of many Tier One construction projects, Durotech's ECO friendly low VOC and green building products proved to be a high-quality environmentally friendly alternative to other waterproofing solutions on the market.



CASE STUDY

ALTITUDE

Parramatta's Tallest Riverfront Residential Tower
330 Church Street Parramatta NSW 2150



- **PROJECT**
Sydney, NSW, Australia
- **PROJECT COMPLETION DATE**
February 2017
- **DEVELOPER**
Meriton

PROJECT SPECIFICATIONS

Altitude rises over 170m high with 54 levels of luxury apartment living, spectacular views and an unrivalled riverfront location. Live in the heart of the cultural district, surrounded by dining, sporting and outdoor options. Experience the ultimate height of living at Altitude apartments, and enjoy the luxurious fixtures and finishes, designed by award-winning Tony Caro architects.

THE DUROSYSTEM PRODUCT RANGE

Products Used

- Duromix Hibuild WBE
Epoxy Primer
- Duroproof PPM
- Duromastic P15
- Duroseal 25LM

Use Areas

- Planter Boxes
- Internal Wet Areas
- Plant Rooms
- Balconies



Durotech Product Category

Hybrid Sealants

Silicone Sealants

Polyurethane Sealants

Water based Membranes

Polyurethane Membranes

UV Stable Membranes

Cementious Membranes

Sheet Membranes

Water Based Primers

Epoxy Primers

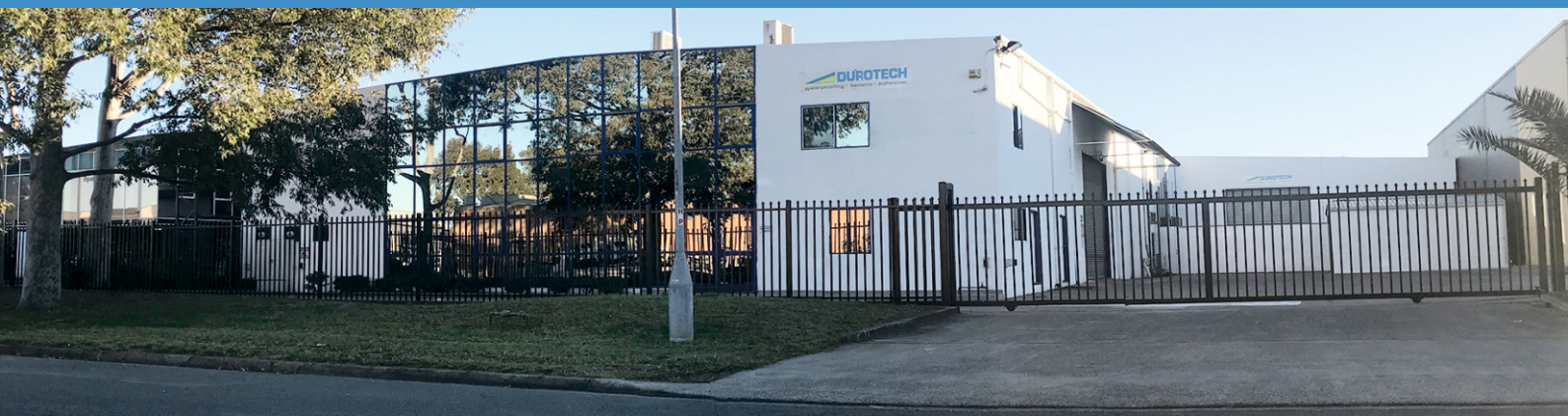
Tapes and Fabrics

Caulking Guns

PROUDLY AUSTRALIAN MADE



Made In Australia For Over 48 Years



VICTORIA

34 Indian Drive Keysborough
Victoria 3173
Tel: 1300 434 272
sales@durotechindustries.com.au
www.durotechindustries.com.au

NEW SOUTH WALES

14 Essex St, Minto, Sydney
NSW 2566
Tel: 1300 434 272
sales@durotechindustries.com.au
www.durotechindustries.com.au

QUEENSLAND

16 Export Drive Molendinar,
Gold Coast 4214
Tel: 1300 434 272
sales@durotechindustries.com.au
www.durotechindustries.com.au

SOUTH AUSTRALIA

30C Richard Street
Hindmarsh, SA, 5007
Tel: 1300 434 272
sales@durotechindustries.com.au
www.durotechindustries.com.au

Follow us @:

